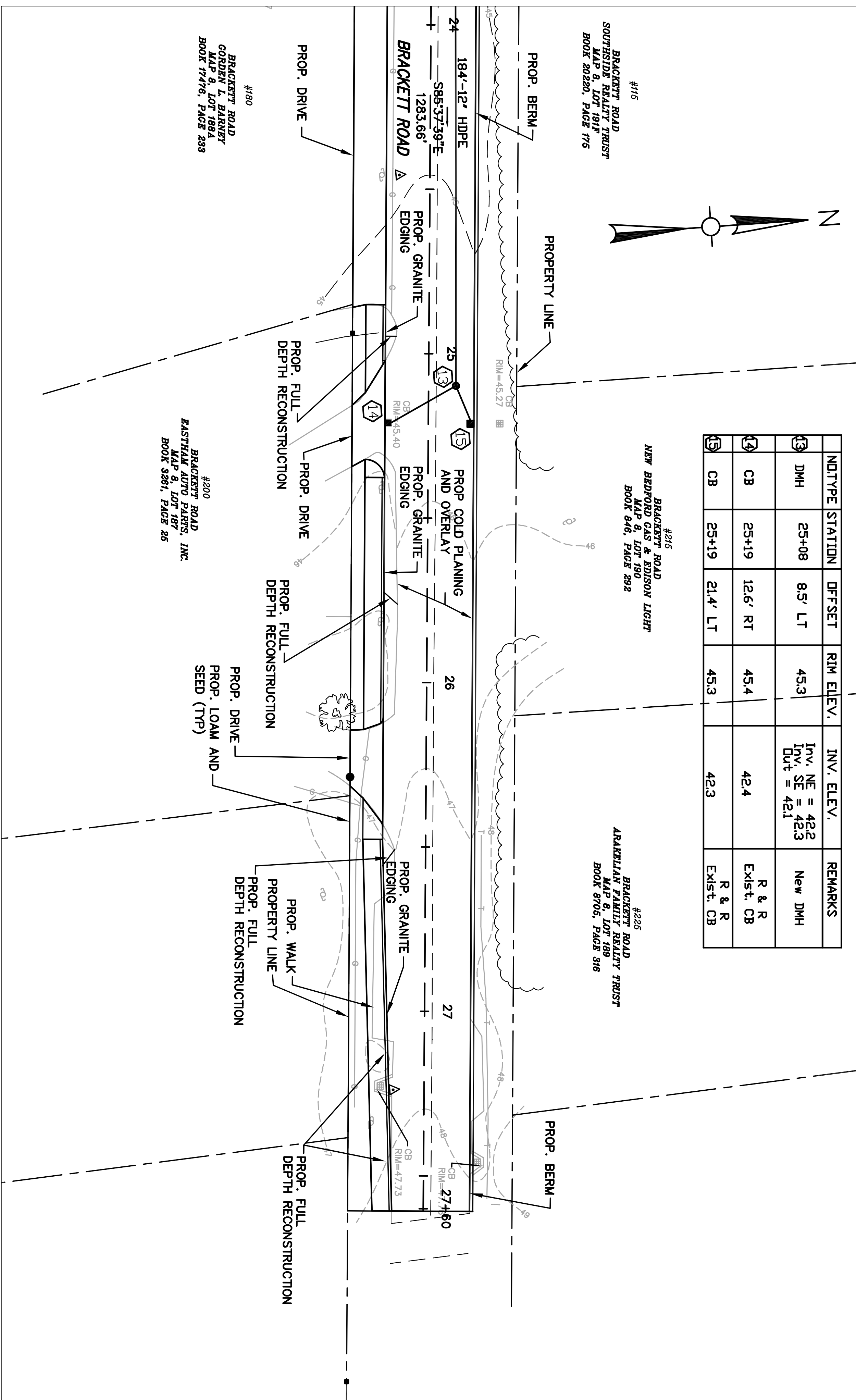
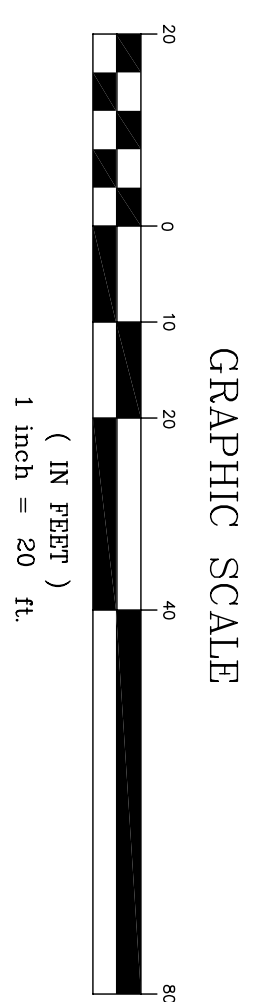
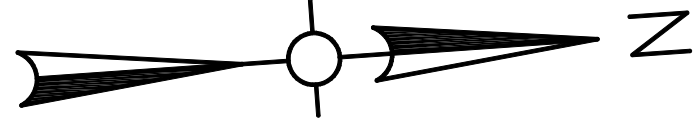


CONTINUED ON
C-3



NO.	NOTICE STATION	OFFSET	RIM ELEV.	INV. ELEV.	REMARKS
3	DMH 25+08	8.5' LT	45.3	Inv. NE = 48.2 Inv. SE = 48.3 Dut = 42.1	New DMH
4	CB 25+19	12.6' RT	45.4	42.4	R & R Exist. CB
5	CB 25+19	21.4' LT	45.3	42.3	R & R Exist. CB



SHEET 5 OF 16

EASTHAM, MASSACHUSETTS
DEPARTMENT OF PUBLIC WORKS
BRACKETT ROAD RECONSTRUCTION
CONSTRUCTION PLANS

FILE NO.	CADD NO.	SCALE:	CONTRACT:	JOB NO.	DR. BY	DSN. BY	CHK. BY	APP. BY
----------	----------	--------	-----------	---------	--------	---------	---------	---------

No.	Date	Dr. By	Ck. By	App. By	Description
		A	P	P	R O V E D
REGISTERED PROFESSIONAL ENGINEER					DATE

Weston & Sampson
ENGINEERS, INC.
ESTABLISHED 1899
Weston & Sampson Engineers, inc.
100 Foxborough Blvd., S.250, Foxborough, MA